

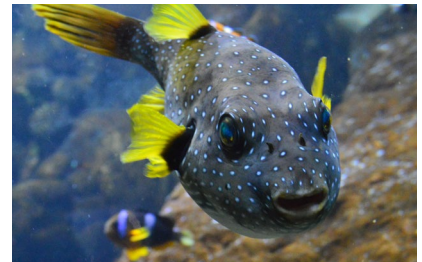
# Marine snap



**Clownfish** live in and near sea anemones.



**A dolphin's** white tummy makes it less obvious to predators below.



**Puffer fish** can quickly swallow water when predators appear, transforming into an incredible ball!



**Stonefish** have bumpy skin which gives them a rock-like appearance.



**Sea sponges** use their pores to filter water for food and oxygen.



**Sea dragons** hide perfectly in seaweed.





**Blue whales** are the largest animals to have ever lived on Earth.



**Cuttlefish** can change colour to escape capture.



The **great white shark** has about 300 teeth, arranged in seven rows.



Although they usually have five arms, some **starfish** have many more.



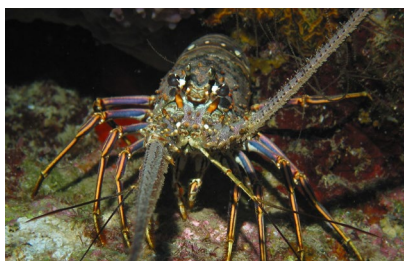
**Sea turtles** migrate through the ocean travelling up to 2,250km.



**Seahorses** use their tails to hold onto sea grass so they don't get washed away.



The largest **giant squid** was 18m long – the same length as a bus!



**Lobsters** have long bodies and large, strong claws. They live in crevices in the rocks.



**Anemones** use their tentacles to trap their prey.





The **Japanese spider crab** has eight legs and two long, clawed forearms.



This **octopus**' blue rings flash brightly when it feels threatened.



The female **anglerfish** uses a light-producing organ to attract her prey in the dark.



**Lionfish** use their feathery fins to attract and stun their prey.



Some **jellyfish** can glow in the dark.